

# SUSTAINABILITY REPORT 2023



# ABOUT US

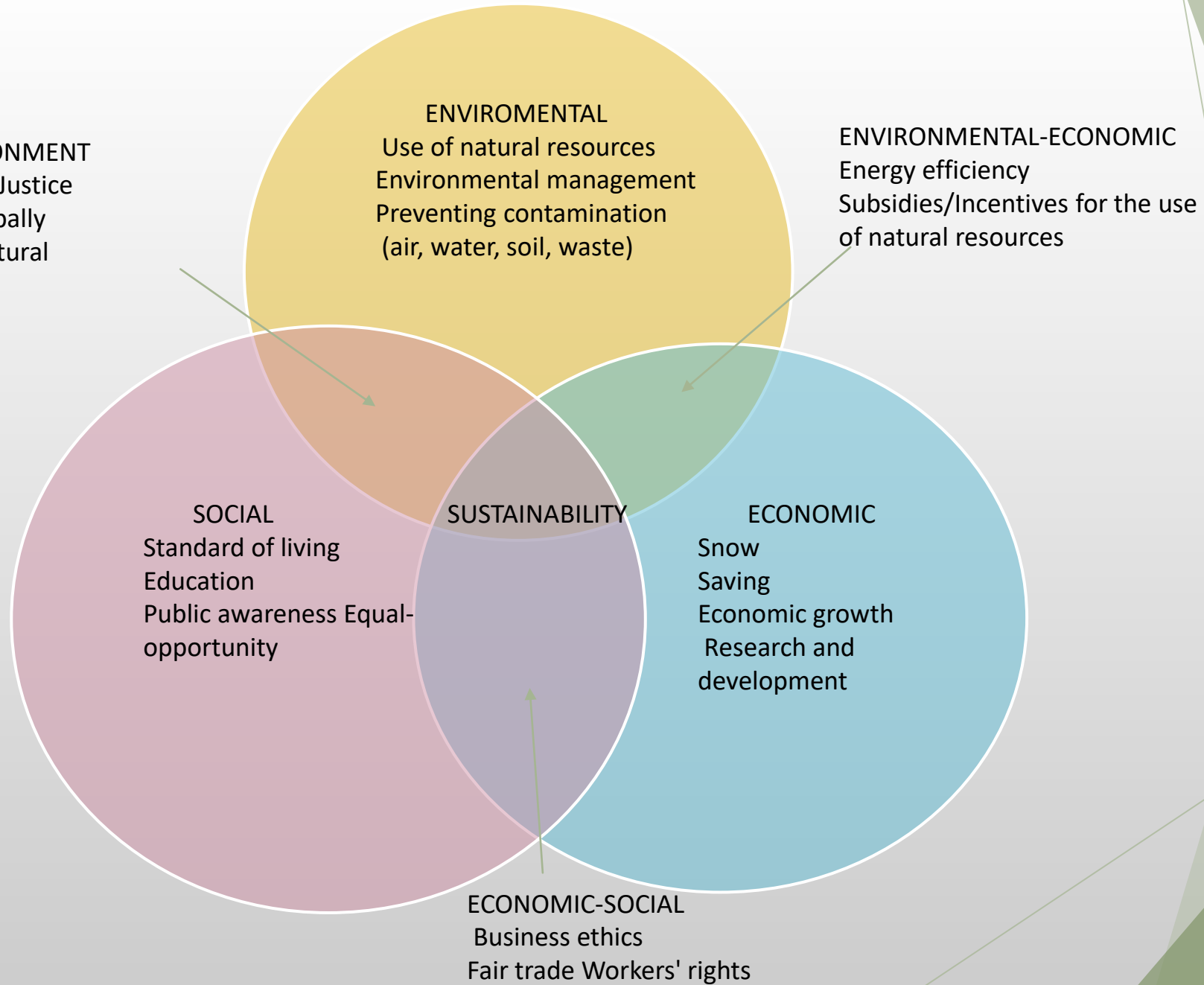
- ▶ Hane Sun Elite Hotel is located close to Side, one of the most popular places in Turkey. The hotel is in Çolaklı, there are many restaurants, shopping and entertainment venues here. Our hotel is 10 km from Side, 15 km from Manavgat, 50 km from Antalya Airport and 65 km from Antalya City. International Golf field in Belek is 40 minutes away. The sea is 850 meters away and we have a beach service. In our hotel, which operates on an all-inclusive system (10:00-24:00), main meals are served as an open buffet.
- ▶ Soft drinks and beer are offered to you at Sahil Bar. Snack Bar offers pita bread, hamburgers, pasta and salad varieties, pancakes, and a wide variety of beverages. Additionally, the Lobby Bar is at the service of our guests 24 hours a day. In our hotel; There is a Main Restaurant, Family Restaurant, Beach Bar, Garden Bar, Lobby Bar, TV Corner, Meeting Hall, Gym, Disco, Shopping Center, Doctor, Laundry, Pool, Children's Pool, Indoor Pool and Slide Pool. You will have the opportunity to have a pleasant and unforgettable holiday at Hane Family Hotel with activities such as various animation shows, mini club, Turkish Bath, sauna, massage, mini golf, billiards, mini football field, table tennis, tennis, basketball court and water sports on the beach. . Note: The hotel management reserves the right to change all contents. In our facility; In addition to the gifts and souvenirs you can buy to take to your loved ones waiting for you at home, you can find markets, men's and women's boutiques, hairdressers and jewelers.

# OUR SUSTAINABILITY JOURNEY

- ▶ As Hane Sun Elite Hotel, we try to use every resource carefully to leave a livable world to future generations. We are aware of our responsibility in this regard and we strive to fulfill all our activities.



**SOCIAL-ENVIRONMENT**  
Environmental Justice  
Locally and globally  
Protector of natural resources



# OUR VALUES

- ▶ Always smiling,
- ▶ Prioritizing guest satisfaction,
- ▶ Who are sensitive to the environment and take the necessary precautions,
- ▶ Who constantly improves himself with trainings and is focused on improvement ,
- ▶ Protecting our history and culture,
- ▶ Doing various activities to increase the motivation of the staff
- ▶ we are located within the facilities.

# REPORT SCOPE

- ❑ Sustainability Action Report
- General Information
- Our Guests
- Regional Activities
- Access For Everyone
- Our Children
- Our Cultural Heritage
- Environmental Activities
- Waste Reduction
- Water Saving
- Energy Saving
- Carbon Footprint
- Our Little Friends
- Our Employees
- Renewable Energy
- ❑ Sustainability Performance Report



# SUSTAINABILITY ACTION REPORT

# GENERAL INFORMATION

- In general, carbon emissions are mainly due to transportation.
- We tell our guests the importance of public transportation instead of using their own vehicles.
- We care about the thoughts of our guests about sustainability.
- Information about natural and cultural areas is provided on our official website.
- Information has been provided about energy savings.
- Studies are carried out on the satisfaction of guests and staff.





# OUR GUESTS

# GUEST SATISFACTION

- A record of the wishes and complaints received from the guest is kept,
  - Surveys are being conducted to measure guest satisfaction,
  - Sites with hotel ratings are being reviewed,
- corrective actions and improvements are made on the satisfaction studies carried out.



# REGIONAL ACTIVITIES

# REGIONAL EMPLOYMENT AND PURCHASING



- We make our purchases from as close to the regions as possible. Thus, we aim to reduce the impact on the environment by minimizing the CO2 emissions of the delivery vehicles of the supplier companies and support the employees of the region.

# SUPPORTING THE PEOPLE OF THE REGION



- In order to provide profit to our women who do hand embroidery in our facility, the exhibition is presented and sold to our guests at certain periods.

# SUPPORT OF THE REGIONAL MANUFACTURER

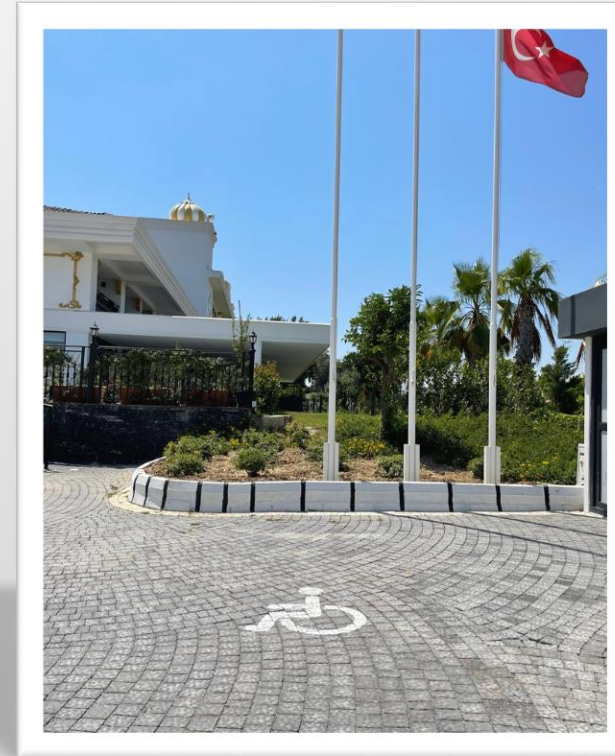
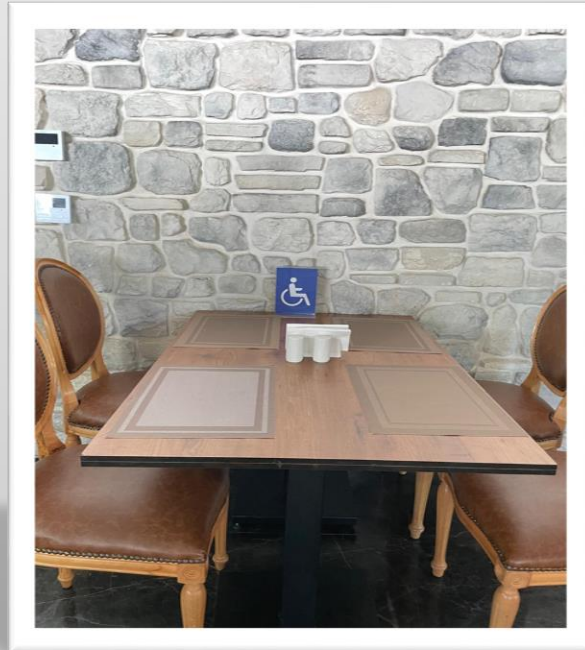
- Support is provided by selling the products of the companies producing in the region at the grocery store located in the hotel.



**ACCESS FOR EVERYONE**

# UNIMPEDED ACTIVITIES

- ▶ In order for our disabled guests who come to our facility to park their vehicles, a separate section is reserved at the entrance of the facility, as well as tables that are close to the buffet and easily accessible in the restaurant.





# UNIMPEDED ACTIVITIES

- ▶ There are unobstructed toilets in public places and on the beach.
- ▶ The landing paths to the beach and the pool have been arranged in a way suitable for the use of our disabled guests.
- ▶ We have guest rooms reserved for disabled guests.



# UNIMPEDED ACTIVITIES

- ▶ In order for our disabled guests to use the pool comfortably, there is 1 mobile pool elevator in our hotel.
- ▶ There is 1 unobstructed sunbed on the beach, a lifeguard will help if necessary.



# OUR CHILDREN

# OUR CHILDREN

- ▶ Mini club activities are organized for the children of guests who come to our facility to have a fun time.



# OUR CULTURAL HERITAGE

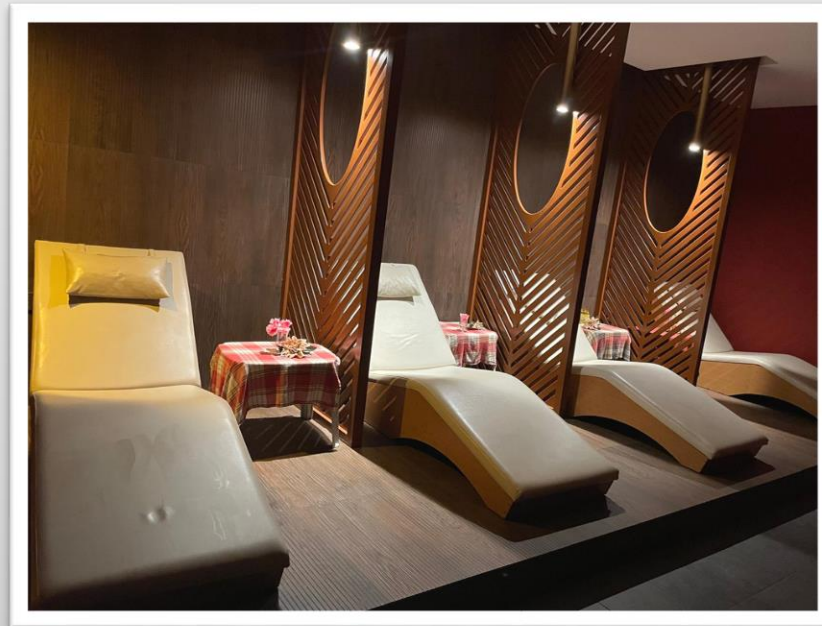
# REFLECTION OF OUR CULTURE



- ▶ Our guests are informed about our Antalya Culture And Heritage Values on the sustainability panel and on our official website.

# REFLECTION OF OUR CULTURE

- ▶ Our Turkish Bath, which all our guests can use, bears traces of our culture. The services provided in the Turkish Bath are carried out in a way that reflects our culture.



# REFLECTION OF OUR CULTURE



- During our Turkish Nights events, our restaurant is organized to reflect our culture. Our employees serve our guests with clothes that reflect the night.
- On our Turkish nights, guests are entertained with live music in accordance with our culture.





# REFLECTION OF OUR CULTURE

- ▶ On Turkish nights, our staff performs shows in local clothes accompanied by the mehter anthem.
- ▶ In our facility, there are paintings reflecting Ottoman art and culture in the general areas.



# PROTECTION OF CULTURAL HERITAGE

- ▶ Our organization has donated to the FOUNDATION FOR THE PROTECTION AND PROMOTION OF ENVIRONMENTAL AND CULTURAL VALUES for the purpose of developing cultural heritage.
- ▶ By cooperating with the Side museum, he provided food assistance in order to contribute to the staff working on the excavations in Side.



# REFLECTION OF OUR CULTURE

- ▶ There are products reflecting our culture in the grocery store located in the facility.



# ENVIRONMENTAL ACTIVITIES

# PLANT OCTOBER

- ▶ A plant October activity was carried out with the participation of the guests and their children in the facility.



# WORLD ENVIROMENT DAY

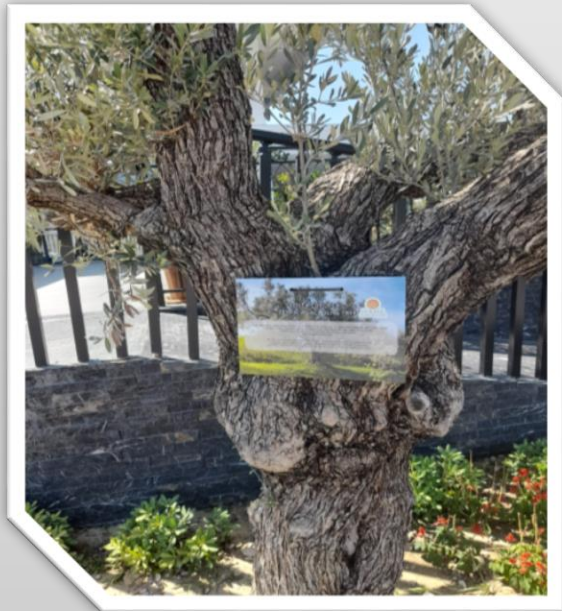


- ▶ Within the scope of '5 June World Environment Day', garbage collection activity was carried out as a team around the hotel.



# BIODIVERSITY

- ▶ Information has been provided on some of the trees in the facility landscape.



# BIODIVERSITY

- Özbal Hotel Management A. In order to leave a livable world for future generations on behalf of Ş, 40 saplings were donated on behalf of Eskişehir Sekiören memorial forest.





# BIODIVERSITY

- ▶ Local plants are included in the landscape of the facility.(orange, lemon, olive, etc.)



# OUR ZERO WASTE APPLICATIONS

- We have a zero waste certificate.
- Our wastes are disposed of by licensed companies.
- Waste separation is carried out in our facility according to the type.
- Our employees are provided with training on waste separation.



# WASTE REDUCTION

# REDUCING WASTE

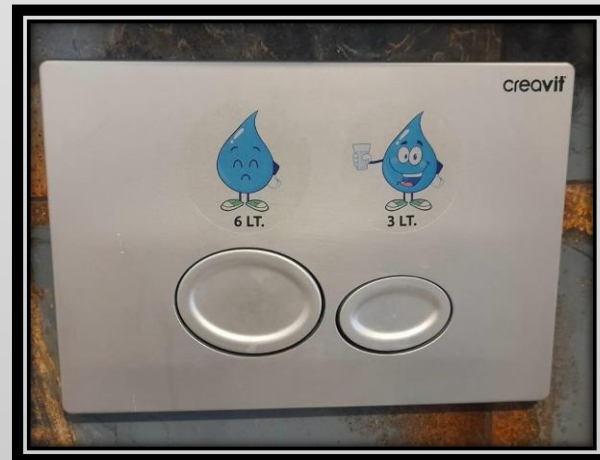
- Dispensers are used in some areas for pet bottle reduction.
- Picnic products used in the breakfast buffet ( honey, jam, butter, etc.) bulk products are used instead.
- Postmix and concentrated fruit juice are preferred instead of bottled drinks in bars.
- The milk that comes to the hotel comes from our farm in stainless steel bags.
- Guests and staff are being made aware.



# WATER SAVING

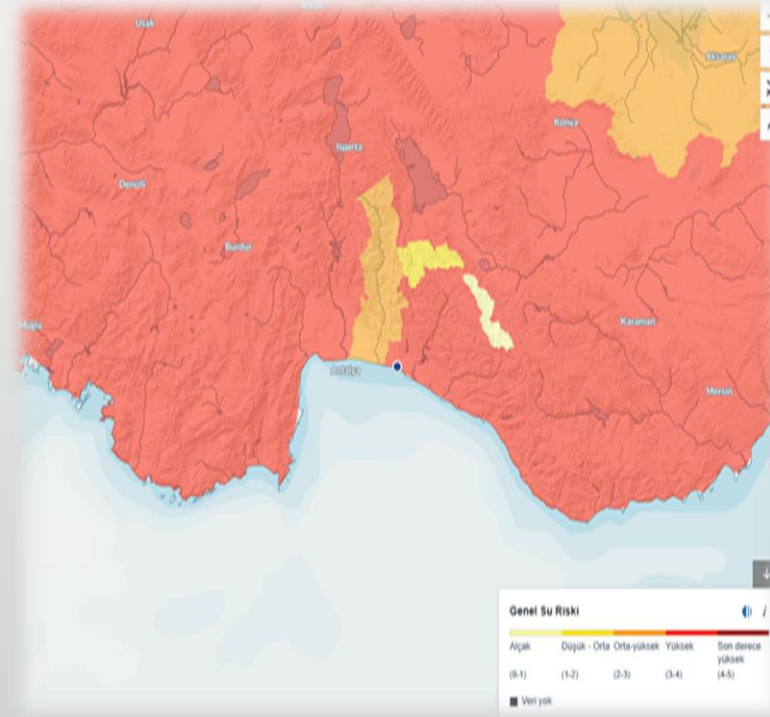
# ACTIVITIES AIMED AT REDUCING WATER CONSUMPTION

- ▶ Photocell taps are available in public places.
- ▶ There are perlators in all of the taps of the facility.
- ▶ Informational articles and visuals are available in the guest room bathrooms, sustainability boards and general areas in order to increase the awareness of our employees and guests.
- ▶ The economical double flush system is used in the toilets.



# WATER RISK ATLAS OF OUR REGION

- Measures have been taken as a facility by taking into account the water situation of the region using the facility water atlas data and anticipating that there will be a decrease in water resources with increasing tourism and population every day.



**ENERGY SAVING**



# REDUCTION OF ENERGY CONSUMPTION



- ▶ Energy is activated in the guest rooms by using energy cards.
- ▶ Systems that disable heating/cooling devices are used in all rooms if the balcony door is opened.
- ▶ In order to prevent energy loss in the guest rooms, thick and dark curtains are kept closed or open according to the season.



# REDUCTION OF ENERGY CONSUMPTION

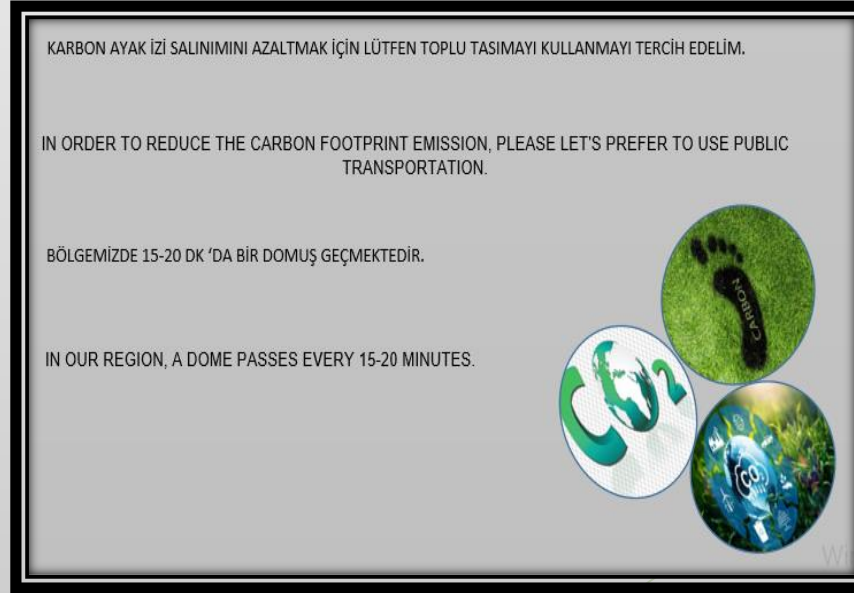
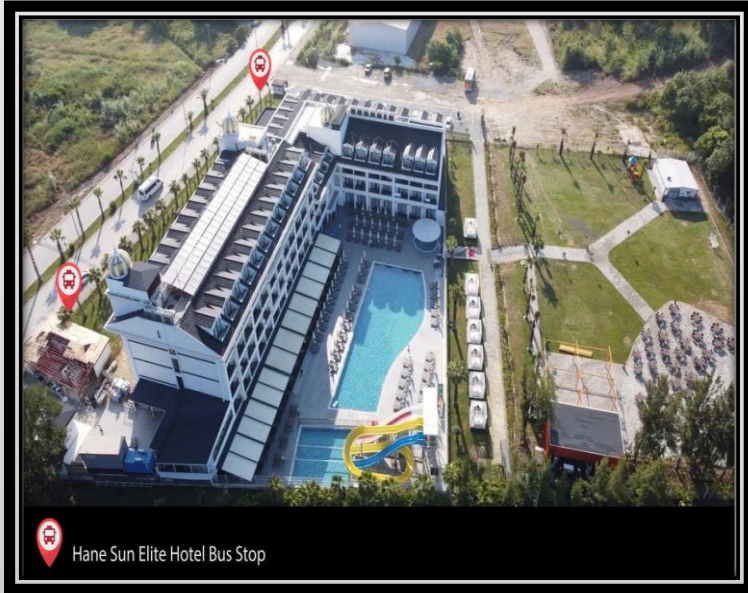
- Photocell lighting is used in some of the public space toilets.
- Solar energy is used for heating the hot water used in the facility.
- LEDs are generally used in lighting.
- A+ devices are preferred when receiving devices.
- There are air curtains at the entrance of the hotel to prevent heat loss.



# CARBON FOOTPRINT

# REDUCING THE CARBON FOOTPRINT

- ▶ There are various species in the landscape of our facility and we support afforestation studies.
- ▶ In order to reduce our carbon footprint and become a more environmentally sensitive facility, we direct both our guests and our staff to public transportation.
- ▶ There are informative posters for our guests and employees.



# OUR LITTLE FRIENDS

# OUR LITTLE FRIENDS



- ▶ There is a house for our cats.
- ▶ Our guests support the nutritional needs of our cats.
- ▶ The veterinarian who works at our farm is interested in the care and treatment of our cats.

# OUR EMPLOYEES

# EQUALITY OF OPPORTUNITY



- ▶ Our employees are paid at least at the minimum wage level.
- ▶ A staff survey is conducted to measure staff satisfaction.
- ▶ We are trying to select our employees mainly from local people.



# MOTIVATION

- ▶ Picnic, boat tour, excursion, etc. to help our employees have a pleasant time. events are organized.
- ▶ According to the survey results of our employees, plans will be made in accordance with their wishes.



# OUR TRAININGS

- ▶ Environmental Awareness, Waste Management And Zero Waste Applications
- ▶ Sustainability Management System
- ▶ Occupational Health and Safety
- ▶ Anti-Abuse Training
- ▶ Fire Training/Drill
- ▶ On-the-Job and Orientation Trainings



# RENEWABLE ENERGY

# RENEWABLE ENERGY SOURCES



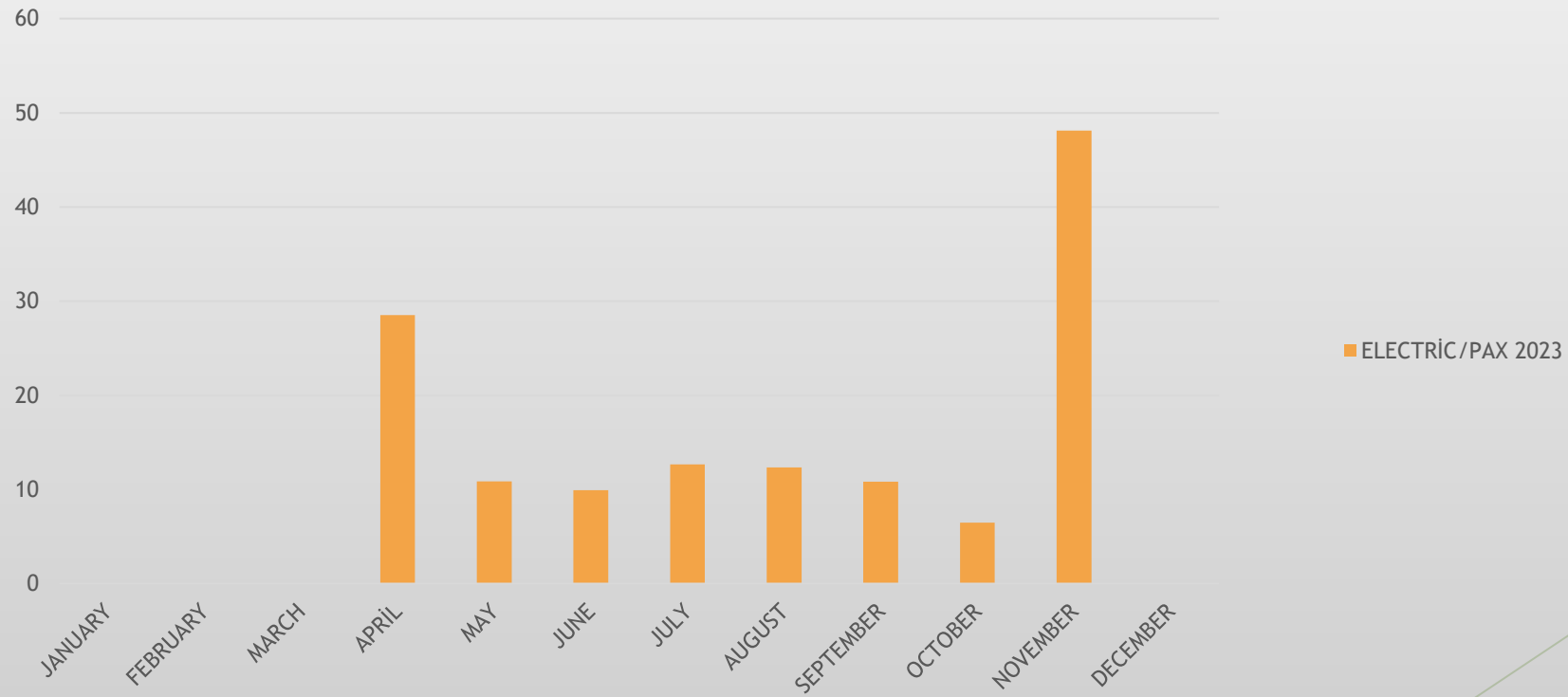
- ▶ Solar energy is used for heating water and thus energy savings are achieved.
- ▶ As Özbal group of companies, there is a 1.2 MW GES investment project in Gümüşhane/Kelkit.



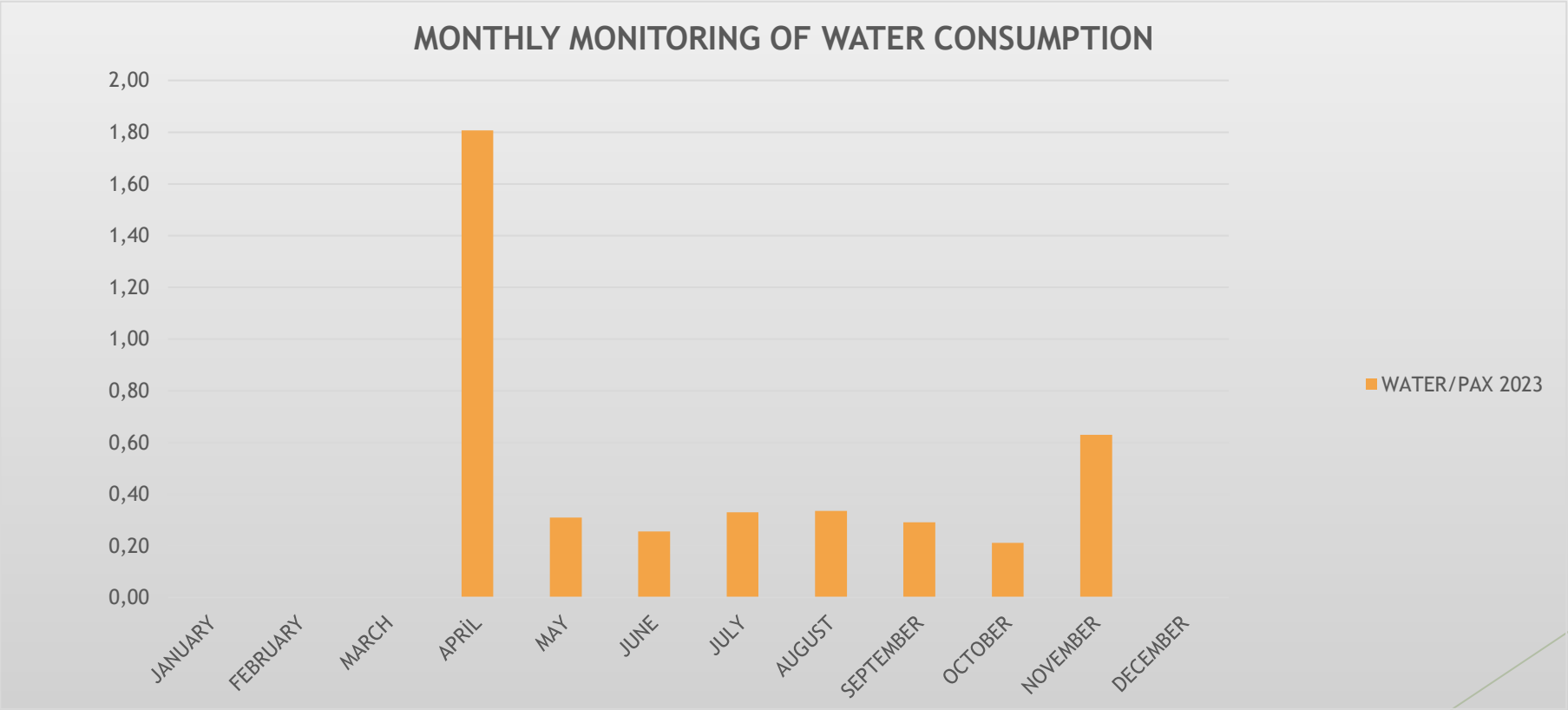
# SUSTAINABILITY PERFORMANCE REPORT

# ELECTRICITY CONSUMPTION

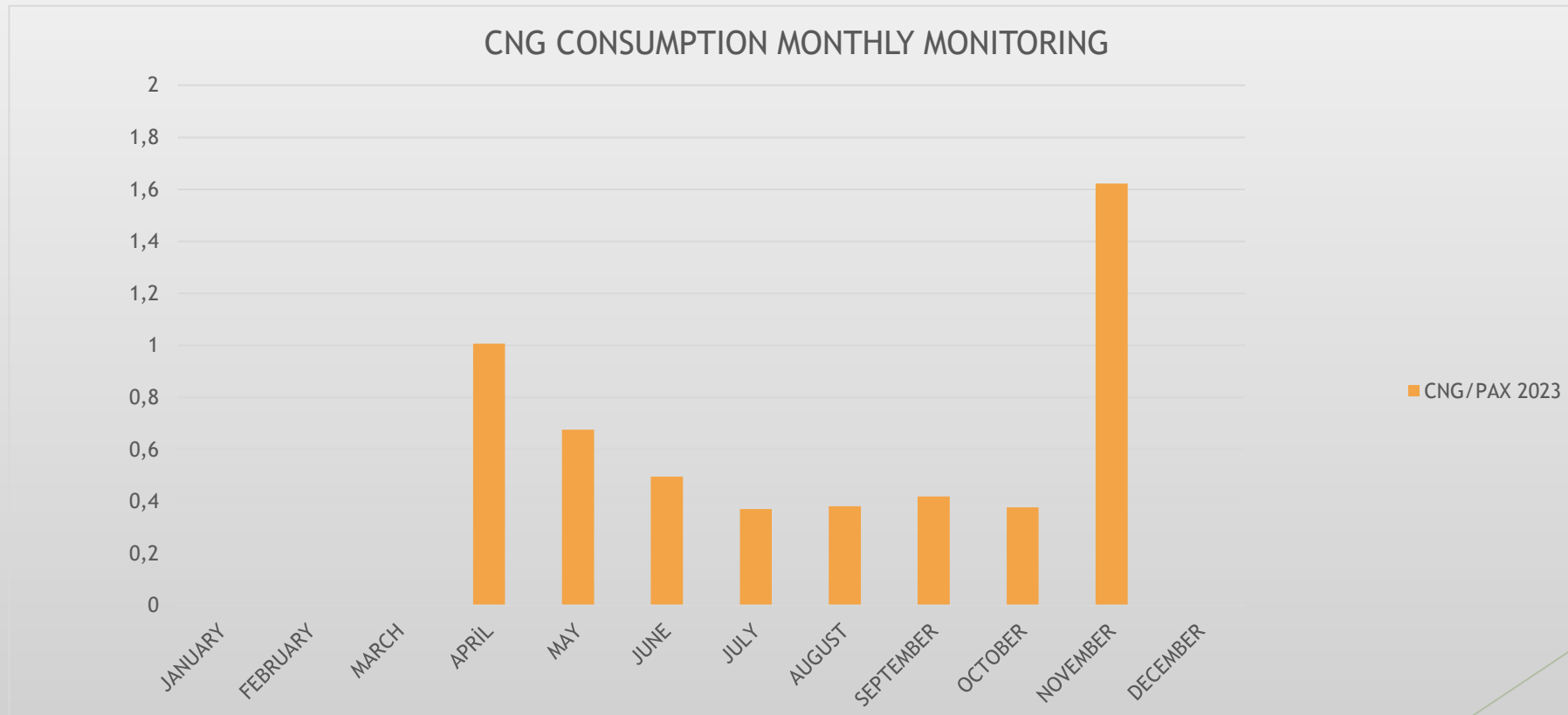
MONTHLY MONITORING OF ELECTRICITY CONSUMPTION



# WATER CONSUMPTION

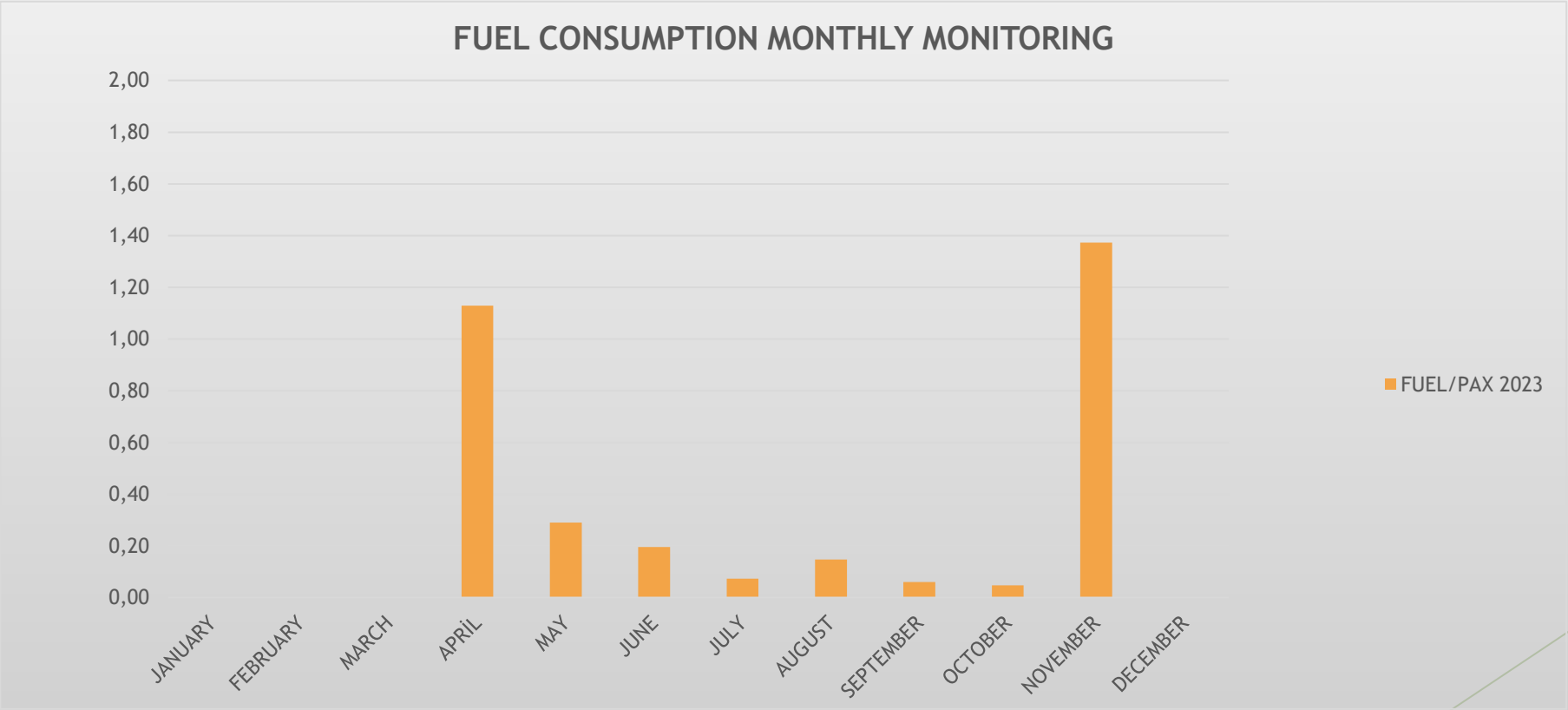


# NATURAL GAS CONSUMPTION

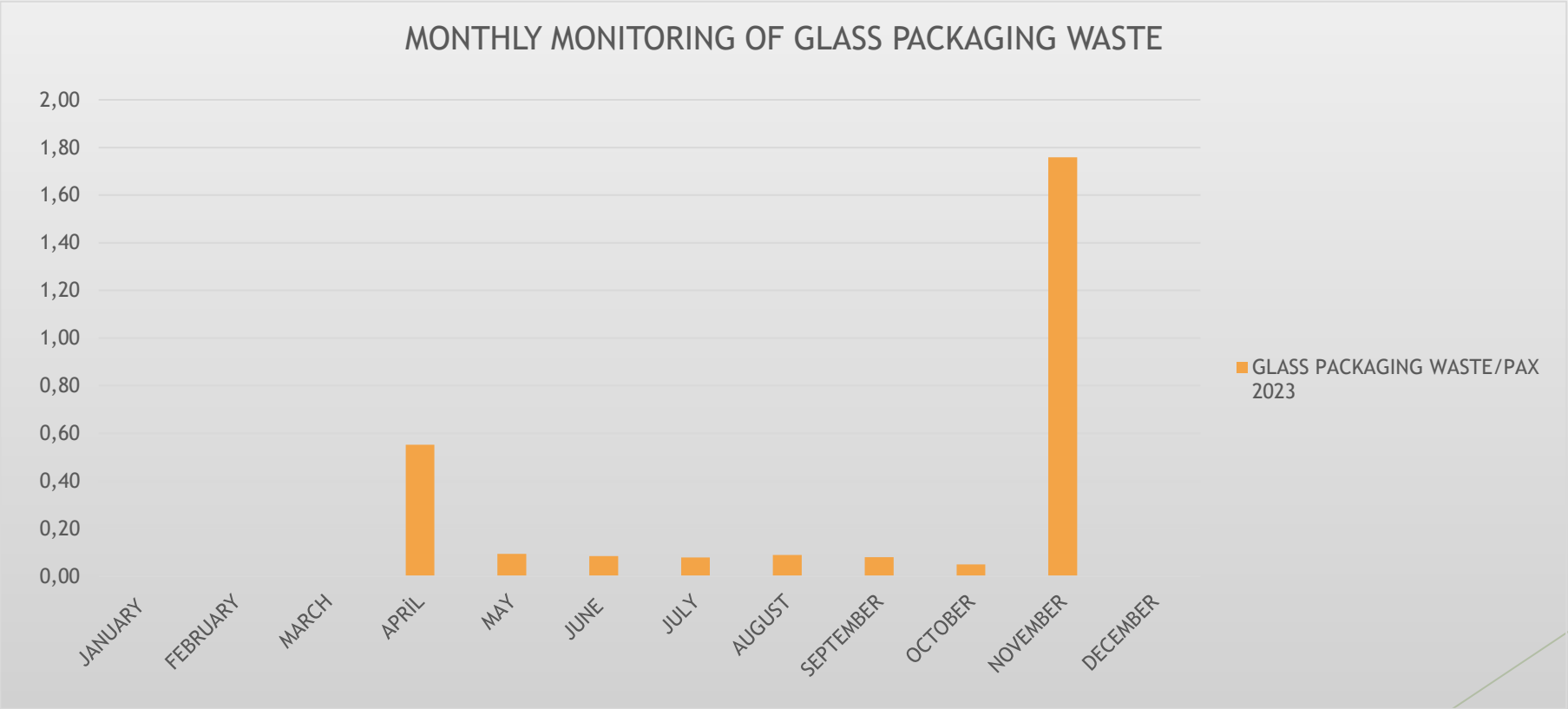




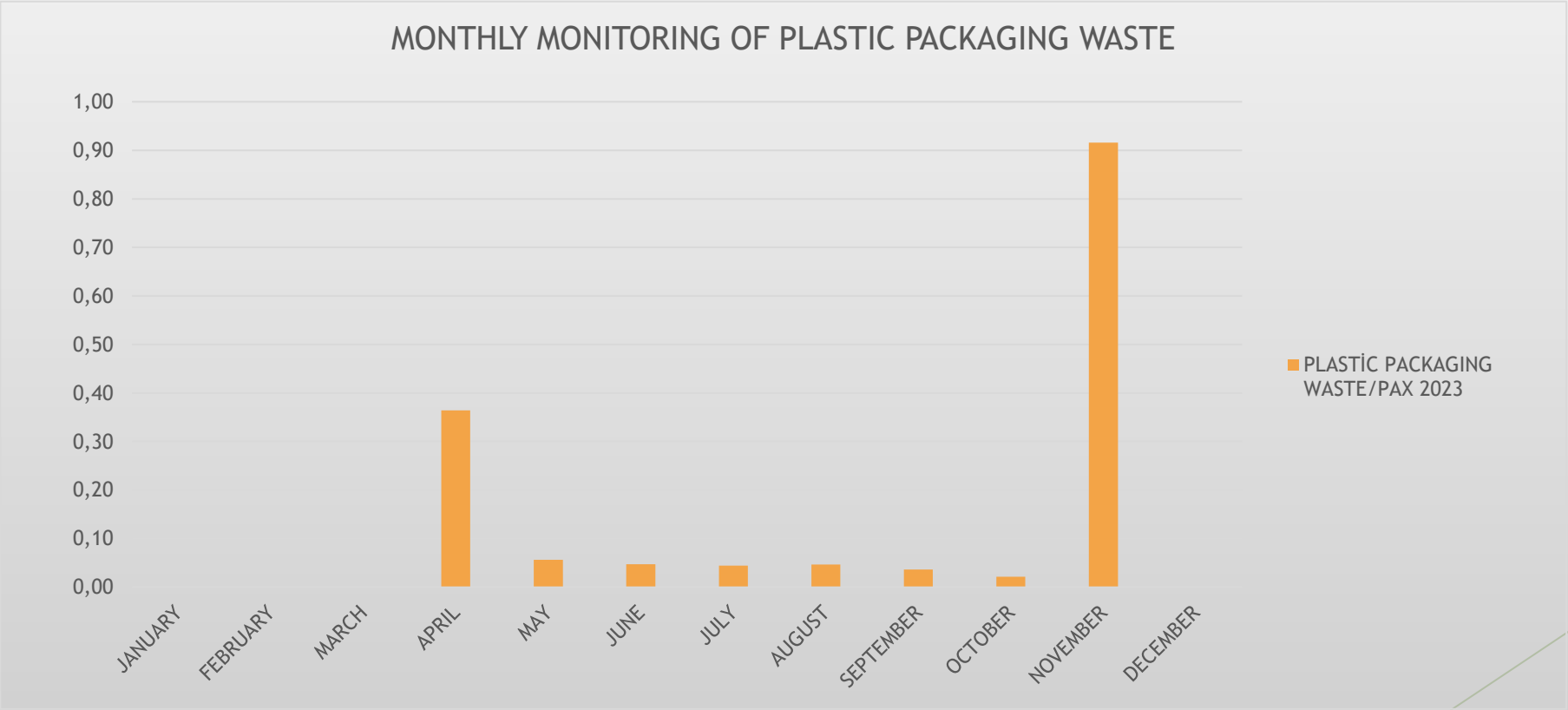
# FUEL CONSUMPTION



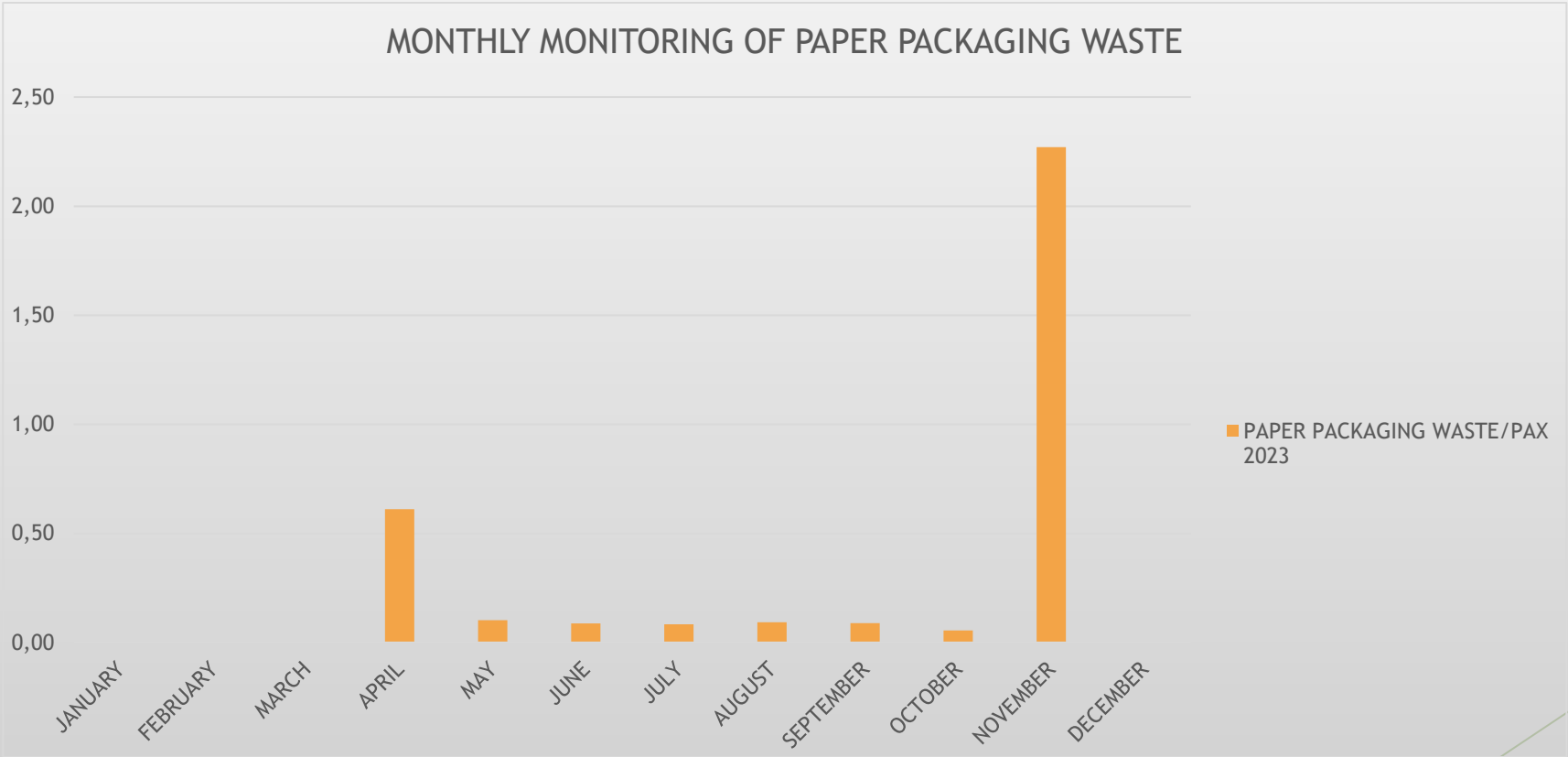
# WASTE CONSUMPTION



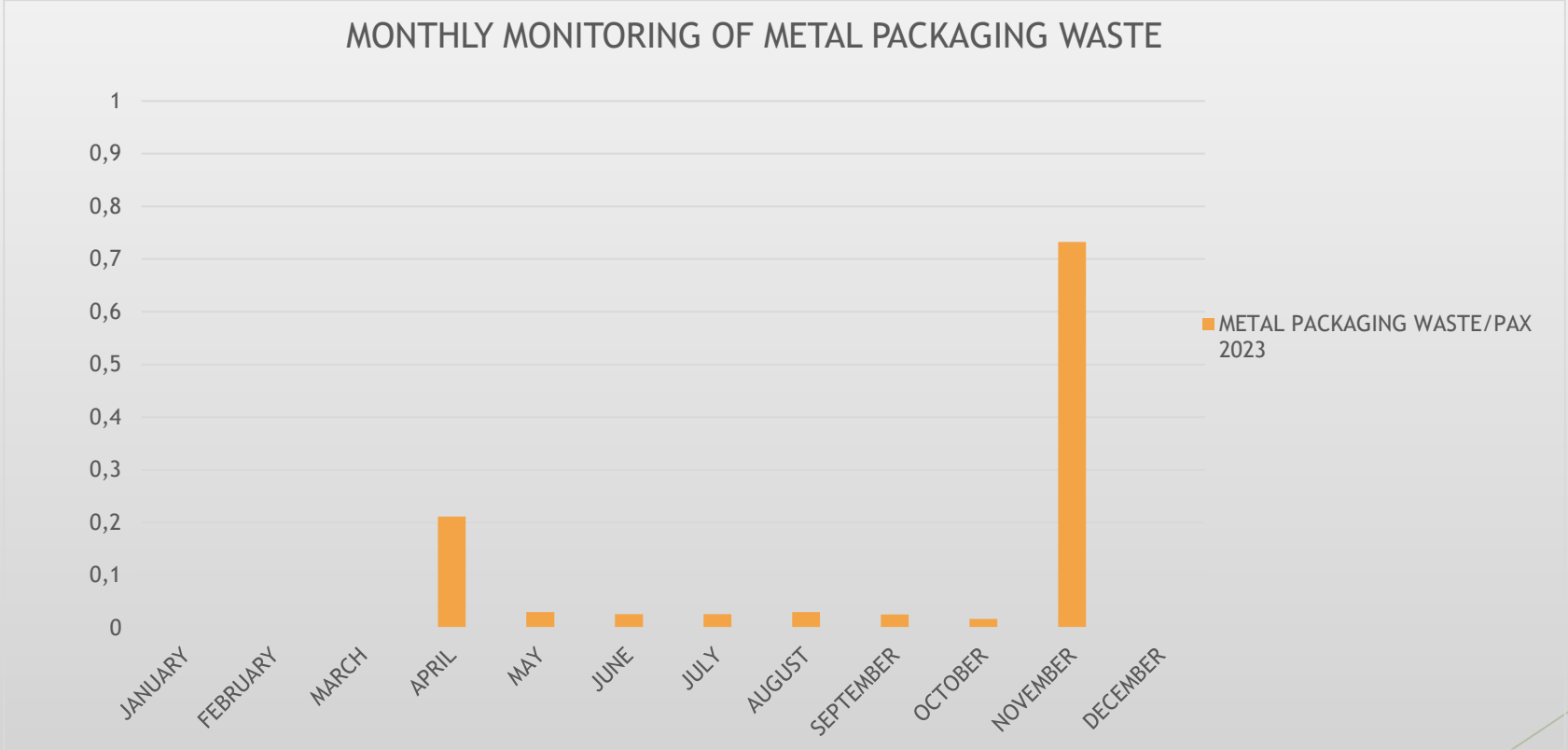
# WASTE CONSUMPTION



# WASTE CONSUMPTION



# WASTE CONSUMPTION



*WE THANK  
YOU.*